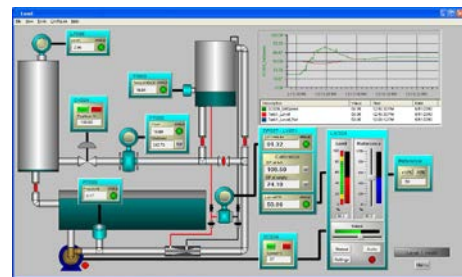


Process Control and Instrumentation Technology PCT-200**Key Features:**

- Complete self contained floor standing unit fitted with wheels for mobility
- Complete with PLC and SCADA software easily connected to the PC using and Ethernet connection
- Clear Tanks and Pipes permit the process in the system to be clearly observed
- Industrial Instruments, Actuators and Sensors
- Calibration and Monitoring of Transmitters and Control Valve
- Comprehensive Curriculum



The PCT-200 Process Control and Instrumentation unit is a fully integrated self-contained floor standing process control system, representative of industrial process control systems used in chemical, oil, food, water and other process industries. The PCT-200 is fitted with state-of-the-art intelligent process instruments and actuators networked via PROFIBUS PA and DP to communicate with a Programmable Logic Controller.

The PCT-200 can be configured to implement a number of different control strategies for flow and level control using cascade, feed-forward and multi-variable strategies and also separate level alarms, and process and device temperature monitoring. Control of the system is through SCADA (Supervisory Control and Data Acquisition) software using a PC with an Ethernet connection.

Water is pumped around the system using a speed-controlled three-phase pump, controlled by a variable frequency inverter with integrated Profibus DP, from a reservoir tank to two process tanks. The pump outflow goes through a venturi-tube providing flow measurement using a differential pressure transmitter. A pressure transmitter is used to measure the discharge pressure from the pump and can be used for experiments on the pump characteristics. Manual ball valves can be set to direct the flow around the system. The level in process tank one, can be measured using the differential pressure transmitter, and in process tank two, using the ultrasonic level transmitter. A temperature transmitter is fitted in process tank one for monitoring of the water temperature.

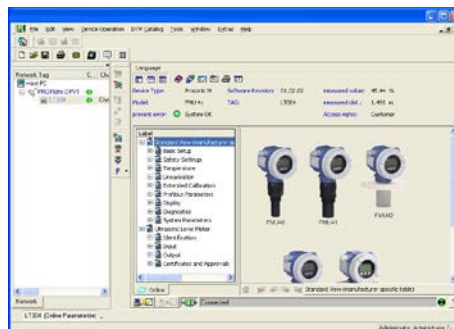
The outlet of process tank one and from the reservoir tank goes to process tank two through an electromagnetic flow meter and then to a modulating control valve fitted with a pneumatic positioner. The control valve can be used in conjunction with the flow transmitter for flow control, or in conjunction with the ultrasonic level transmitter for level control in process tank two. A cascade control system can also be implemented by feeding the level controller output as a set-point to the flow controller.

All instrumentation and actuators use PROFIBUS connectivity. A DP/PA coupler provides a transparent gateway from DP to PA. The PLC incorporates a PROFIBUS DP master which controls cyclic communication with all the field devices. The PLC has an Ethernet interface which enables networking to the PC with the SCADA software.

Curriculum Content and Labworks

Instrument Setup and Calibration

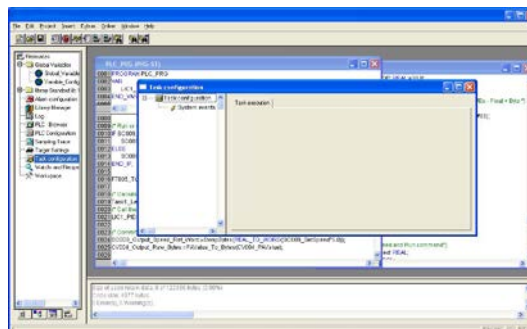
- a. Temperature measurement
 - i. Temperature measurement and status indication
 - ii. Scale and alarm limit setting, simulation mode for intelligent sensors.
- b. Sensor and transmitter diagnostics. Level measurement
 - i. Hydrostatic level measurement and calibration, effects of density.
 - ii. Ultrasonic level measurement and calibration.
 - iii. Ultrasonic reflection envelope curve and problem diagnosis.
- c. Flow measurement
 - i. Volume and mass flow measurement using electromagnetic flow meter.
 - ii. Flow meter calibration.
 - iii. Flow rate measurement using a differential pressure transmitter and orifice plate.
 - iv. Square root extraction within an intelligent transmitter.
 - v. Calibration and performance of a head meter.
 - vi. Process noise in flow measurement.



Instrument Monitoring and Calibration

Actuation Elements and Characteristics

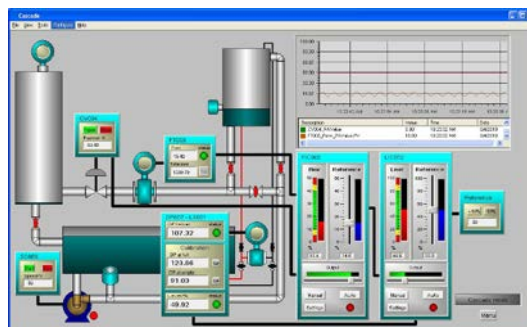
- d. Control valve
 - i. Valve positioner operation and calibration.
 - ii. Valve sizing calculation and verification.
 - iii. Measurement of valve installed characteristic.
 - iv. Fail-safe action in the event of pneumatic or electronic failure.
- e. Inverter, Motor and Centrifugal pump
 - i. Induction motor speed control and characteristics
 - ii. Setting up a drive over PROFIBUS.
 - iii. Centrifugal pump speed/flow/head characteristic measurement.



PLC Programming Software

Feedback Control Systems

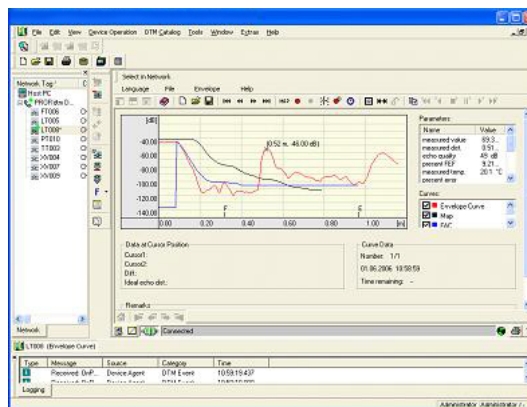
- f. Level control
 - i. Control of level using variable pump speed.
 - ii. Control of level using control valve.
 - iii. P, PI and PID level controller tuning and performance.
- g. Flow control
 - i. Flow control using variable pump speed.
 - ii. Flow control using a control valve.
 - iii. P, PI and PID controller tuning and performance.
- h. Cascade and feed-forward control
 - i. Cascade control of level and flow
 - ii. Feed-forward control using flow measurement
 - iii. Multi-variable control of level and flow



SCADA Software – Cascade

Fieldbus Systems

- i. PROFIBUS system configuration for cyclic data
 - i. Basic DP device configuration, GSD files, modules and parameters.
 - ii. Bit-rate selection and cycle time effects.
 - iii. PA system configuration, process value and status byte handling.
 - iv. Diagnostics, watchdog timer setting and fail-safe action.
- j. Acyclic communications
 - i. Use of engineering tools with acyclic communication capability.
 - ii. Device profiles: physical, transducer and function blocks
 - iii. Methods of device calibration using acyclic communications
 - iv. Advanced device diagnostics and status
 - v. Auto, manual and simulation modes of operation for transmitters and actuators.
 - vi. Predictive maintenance features in a modern control valve positioner
 - vii. Predictive maintenance features in a modern inverter.



Instrument Control Software

Ethernet and LAN Technology

- k. Network configuration and checking
 - i. MAC and IP addressing, setup and checking
 - ii. PC networking diagnostic facilities.
 - iii. Remote device configuration using http (web) technology.

Process Unit

Tanks	Reservoir Tank	54 Litres Approximately
	Process Tank 1	37 Litres Approximately
	Process Tank 2	21 Litres Approximately
Pipes		1 Inch Clear UPVC
	Rated working pressure of piping	15.2 bar, giving a safety factor of ≈ 10 .
Flow Rate Around the System		Nominal maximum flow rate 20 Litre per Minute
Pump		Three Phase, 0.37 KW Flow rate up to 40 Litres per Minute Head up to 40 Meters
Linear flow/head and flow/speed characteristics		At a speed of 2900 rpm (50 Hz) Maximum Head of 16m (≈ 1.6 bar) at zero 2m at 16 Litre per Minute
Flow Transducer		Electromagnetic flow meter Bidirectional measurement of liquids with a minimum conductivity of $\geq 5 \mu\text{S/cm}$ Pulse output: $\pm 0.5\%$ o.r. $\pm 1 \text{ mm/s}$ (o.r. = of reading) Current output: plus typically $\pm 5 \mu\text{A}$
	Maximum measured Error	
Pressure Transducer		
	Measuring Ranges	Up to 400 bar
	Output	4 to 20 mA
Ultrasonic Transducer		
	Maximum measuring range:	5 m in fluids / 2 m in bulk materials Integrated temperature sensor for automatic correction of the temperature dependent sound velocity
Temperature Transducer		Pt 100 sensing element with class A accuracy (DIN EN 60751) or 1/3 DIN B
DP Cell Measuring Ranges		From $-10...+10$ mbar to $-40...+40$ bar
Control Valve		2/2-way Globe Control Valve with electronic control of positioning (EN 5167-4) provides flow measurement for the pump delivery. The maximum differential at a flow rate of 16 litre/min is 0.6m, the overall loss 0.1m.
Venturi		
	DP/PA coupler	
	Host	PROFIBUS DP 93.75 kbps. Connecting terminals; Termination 100 Ohm, switchable
	Segment	PROFIBUS PA 31.25 kbps Manchester Bus Powered; Bus termination 100 Ohm switchable
	Ethernet gateway	Ethernet/PROFIBUS DP gateway with integrated Web server. Profile 3.0 for PROFIBUS PA devices
	No. of devices	Physical: Max. 31 PROFIBUS DP devices per channel, Max. 125 PROFIBUS DP devices if repeaters are used Logical Max. 125 PROFIBUS DP devices
Motor Control Inverter		250V AC 1.1KW including Profibus-DP

Ordering Information

Model Number: PCT-200

Consists of:

PCT-200 Process Control and Instrumentation Rig Floor standing;
constructed from 40 x 40mm Aluminium Profile Frame, 1 Inch Clear PVC Pipes and Clear PVC Tanks

- | | | |
|---|---|--|
| • Control Cabinet with window | • DP/PA Coupler | • Ultrasonic Level Transmitter |
| • Three Phase Inverter with PROFIBUS DP interface | • PROFIBUS Master PLC IPC | • Temperature Transmitter |
| • Venturi Tube and Parts | • Ethernet/PROFIBUS DP gateway | • Differential Pressure Transmitter |
| • Three Phase Pump | • Six-way PROFIBUS PA segment protector | • Electromagnetic Flow Meter |
| • Pressure Regulator with Gauge | • Ethernet Switch | • Pressure Transmitter |
| • Manual Control Valves | • SCADA software | • Global Control Valve |
| • Curriculum Manual and CD | • Asset Management Software | • PLC Configuration and Programming Software |

Required

Air Supply required: - 6 Bar continuous supply Mains supply required: - 240v AC Single Phase
A suitable PC with Minimum; Pentium processor, 1GB RAM, 20GB HDD, CDROM Drive, USB 2 interface and Windows XP or above.

Weights and Dimensions

Un-Packed	Packed
Dimensions (cm)	Dimensions (cm)
Weight	Weight

176 L x 70 W x 195 H	192 L x 88 W x 218 H
150kg	320kgs (Tarre weight 170 kgs)

Bytronic Ltd., reserves the right to make product improvements at any time and without notice and is not responsible for typographical errors. Bytronic Ltd., recognise all product names used herein as trademarks or registered trademarks of their respective holders.

BYTRONIC

Educational Technology

Bytronic Limited

124 Anglesey Court, Towers Business Park,
Rugeley, Staffordshire, WS15 1UL.

United Kingdom

Tel; +44(0)3456 123 155 Fax; +44(0)3456 123 156
Email: sales@bytronic.net Website: www.bytronic.net